

THE 2026 CITY GUIDE AND MAP

PITTSFIELD

downtown & beyond



Downtown
Pittsfield Inc.



LOVE
PITTSFIELD

DOWNTOWNPITTSFIELD.COM and LOVEPITTSFIELD.COM

A collaboration between Downtown Pittsfield, Inc. & the City of Pittsfield's Office of Cultural Development

PITTSFIELD

where nature and city meet

The City of Pittsfield, the Berkshires' largest city, is home to both a growing business and creative sector, as well as multiple conservation areas, Pontoosuc and Onota Lake, the Pittsfield State Forest, and a 200-acre ski area at the edge of the city.

Pittsfield houses award-winning restaurants, world-class performance venues, one-of-a-kind historic properties, unique retail shops, a vibrant music and art scene, varied outdoor recreation opportunities, and so much more. Create your perfect Pittsfield itinerary with the help of this guide. Whether you are a foodie, a theatre enthusiast, or an outdoor explorer, you will find your perfect day here. The City of Pittsfield welcomes you with open arms to explore all that our city has to offer. Come be a part of our vibrant community. You won't be disappointed!

Follow [@downtownpittsfield](#) and [@culturalpittsfield](#) on Facebook and [@downtownpittsfield](#) and [@lovepittsfield](#) on Instagram for daily updates on all things Pittsfield!

ANNUAL EVENTS.....4

Enjoy family-friendly activities year-round organized by our community and cultural organizations – featuring art, entertainment, and food!

EXPERIENCE PITTSFIELD 6

Explore a lively roster of music, dance, community festivals, and celebrations, including two highly acclaimed professional theatres. Tour historic properties and local art exhibits, visit the Berkshire Museum, and explore recreation and fitness opportunities.

DOWNTOWN DINING15

Savor cuisine from around the world to satisfy every palate and budget. Breakfast, lunch, coffee, dinner, and drinks, often accompanied by live music.

DOWNTOWN SHOPPING17

Relish in the local shopping experience with exemplary customer service, attention to detail, and items you won't find any place else including formal wear, vintage clothing, jewelry, art, plants, books, gifts, and so much more!

DOWNTOWN MAP & PARKING 22

Navigate downtown Pittsfield via a vibrant map with points of interest and parking lots identified.

WHERE NATURE AND CITY MEET24

Pittsfield offers the best of both worlds: acres of beautiful landscapes, including forests and waterways, and a downtown hub with entertainment, public art, shopping, dining, fitness, and an array of services to meet everyday needs.

DOWNTOWN LIVING & WORKING 26

Browse our community and service organizations who will help you meet the demands of everyday life - from accountants to medical services to religious institutions.

DOWNTOWN DIRECTORY40



Come visit our **NEW**,
expanded location at
the former Plaine's!



Plush, Puzzles, Miniatures, Board Games,
Gunpla, RPGs, TCGs and more!



www.manacrypt.com
(413) 553-3623

55 West Housatonic St
Pittsfield, MA 01201

THANK YOU

Our Major Donors & Downtown Pittsfield, Inc. Members

Adelson & Company PC BeaconBank The Berkshire Eagle

Berkshire Health Systems



GREYLOCK FEDERAL CREDIT UNION

Guardian



MILL TOWN FOUNDATION

MountainOne BANK | INSURANCE | INVESTMENTS

NET BANK

CoopBank

Major Donors: Downtown Property Owners



MILL TOWN



Capitol Square Associates

Linda Mitchell & Giora Witkowski (Brotherhood Building)

Steve Oakes

Dennis McIntosh (Nord Strasse LLC)

MURAL TOUR



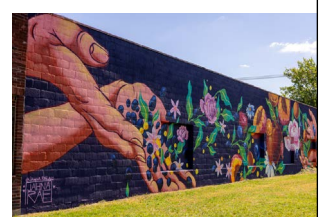
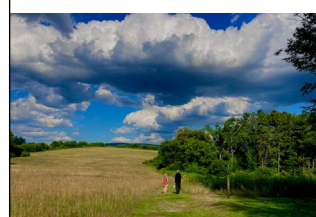
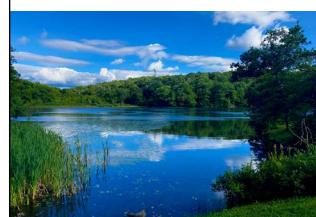
DOWNTOWN PITTSFIELD APP

Enjoy a virtual walking tour of over two dozen murals in Pittsfield.

Download the FREE Downtown Pittsfield App in the App Store or on Google Play.

View the app in your browser: downtownpittsfield.stqry.app

Cover photo: All the Lights, Brian Beckett. "Sisterhood" by Silvia Lopez Chavez, credit Nick Russo; "Untitled." by qwnto, credit Kimberly Gritman; "Gaia" mural by Michael Carty; "Making Wishes" by Cara Petricca; "Burbank Place", credit Kimberly Gritman; "Downtown Bound" by Carly Holmes



Learn more on pages 24 & 25

Marina Dominguez, Kara Thornton, Jill McLean, Marina Dominguez, Bousquet Mountain, Kara Thornton, Marina Dominguez, Autumn Phoenix, Kimberly Gritman

ANNUAL EVENTS

2026–2027

Berkshire Theatre Group at The Colonial Theatre

Year round | berkshiretheatregroup.org

First Fridays at Five

May, June, August, September | lovepittsfield.com

First Fridays Artswalk

Family Fun Zone

Makers Market

Music, Dance and more!

First Fridays Artswalk

May-September | firstfridaysartswalk.com

Pittsfield Farmers Market (*Outdoors at The Common*)

May-October, Saturdays | farmersmarketpittsfield.org

ArtWeek Berkshires

May 15-25 | berkshires.org

Berkshire Pride Flag Raising Ceremony

May 30 | Pittsfield City Hall | berkshirepride.org

Rainbow Run 5K

May 31 | Ashwillticook Rail Trail, Crane Avenue | berkshirepride.org

Barrington Stage Company

May-October | barringtonstageco.org

Berkshire Pride Festival and Parade

June 20 | The Common | berkshirepride.org

Juneteenth Celebration

June 21 | Durant Park | naacpberkshires.org

Fourth of July Parade

July 4 | pittsfieldparade.com

Berkshire Jazz Summer Showcase

July 18 | Westside Riverway Park | berkshiresjazz.org

Live on the Lake

Wednesdays July 8-August 19 | Onota Lake | live959.com

Summit Sounds – Concert at the Summit

August-September | Bousquet Mountain | bousquetmountain.com

Fire on the Mountain Jam III

August 1 | Bousquet Mountain | bousquetmountain.com

Bousquet Jazz and Blues Festival

August 8 | Bousquet Mountain | bousquetmountain.com

Local Love Arts Festival

Sunday, September 27 | The Common | downtownpittsfield.com

Oktoberfest

October 3 | Bousquet Mountain | bousquetmountain.com

Downtown Pittsfield... It's Alive!

October 17 | downtownpittsfield.com



Fourth of July Parade, credit Autumn Phoenix

City of Pittsfield's Halloween Parade

October 30 | pittsfieldma.gov

Pittsfield Farmers Market (*Indoors at Zion Lutheran Church*)

November-April, Second Saturday of the month

farmersmarketpittsfield.org

Wandering Dance Festival

November 6-14 | milltownfoundation.org

Small Business Weekend

November 27-29 | downtownpittsfield.com

Wreath Art Sale & Auction

December 4 | lovepittsfield.com

Festive Frolic

December 4 & 5 | downtownpittsfield.com

A Taste of Downtown

February | downtownpittsfield.com

10x10 Upstreet Winter Arts Festival

February 11-21 | lovepittsfield.com

Ten Days of Play

February | berkshiremuseum.org

BSC 10x10 New Play Festival

February-March | barringtonstageco.org

Downtown Celebrates Spring

April | downtownpittsfield.com

21st Annual Pittsfield CityJazz Festival

April | berkshiresjazz.org

Baby Animals at Hancock Shaker Village

April-May | hancockshakervillage.org

ArtWeek Berkshires

May 21-31 | berkshires.org

Visit lovepittsfield.com and downtownpittsfield.com for a daily calendar of all events.

EXPERIENCE PITTSFIELD

Designated one of the Cultural Districts in Massachusetts, Pittsfield's downtown, known as the Upstreet Cultural District, boasts a lively roster of music, dance, theatre, community festivals, and celebrations, including Phoenix Theatres Beacon Cinema and two highly acclaimed professional theatres – the Colonial Theatre, part of Berkshire Theatre Group, and Barrington Stage Company. There's a vibrant visual arts scene in Pittsfield too, with public art, artist studios and cooperatives, and the First Fridays Artswalk. Cultural festivals include First Fridays at Five, Berkshire Pride, Pittsfield CityJazz Festival, 10x10 Upstreet Arts Festival, and more!



Barrington Stage Company's *La Cage aux Folles*, credit Jeremy Daniel

ENTERTAINMENT/PERFORMING ARTS

Barrington Stage Company

30 Union St. & 36 Linden St. | 413-236-8888 | barringtonstageco.org
Award-winning, world-class theater in downtown Pittsfield. Barrington Stage presents major musicals, masterful classics, thought-provoking new works, hilarious comedies, concerts, cabarets, and youth theatre. May–Oct. See ad on back cover.

BeatNest

163 North St. | 413-464-4066 | beatnestschool.com

Berkshire Music School

30 Wendell Ave. | 413-442-1411 | berkshiremusicschool.org
Berkshire Music School fosters the love and pursuit of music through quality music education for all levels and all ages, both privately and in community group class settings. Private classes are available for most instruments while group classes are offered on a pay-what-you-wish basis for many instruments and for a variety of ages. Founded in 1940, BMS has been a staple in the community for over 85 years.

Berkshire Theatre Group – Colonial Theatre

111 South St. | 413-997-4444 | berkshiretheatregroup.org

Berkshire Theatre Group is a center for acclaimed and transformative work, featuring world-class theatre and musicals, legendary musicians, comedy, and family events at The Colonial Theatre in Pittsfield and The Unicorn Theatre in Stockbridge. See ad on back cover.

Berkshires Jazz, Inc.

413-841-7718 | berkshiresjazz.org

Berkshires Jazz promotes jazz education and presents a wide range of nationally known and rising groups, as well as local performers, at festivals and concerts in Berkshire County. Flagship events include the Pittsfield CityJazz Festival, the Bousquet Jazz & Blues Festival, and several free and ticketed events throughout the year. See ad on page 8.

Phoenix Theatres Beacon Cinema

57 North St. | 413-358-4780 | phoenixmovies.net

Experience movies the way they're meant to be seen at Phoenix Theatres Beacon Cinema — with powerful Dolby Digital 7.1 surround sound, stunning big-screen presentation, and reserved seating in heated, reclining loveseats for ultimate comfort.

MUSEUMS/LIBRARY

Berkshire Athenaeum, Public Library

1 Wendell Ave. | 413-499-9480 | pittsfieldlibrary.org

We're not just books (but we have those, too!). Want access to 3D printers, computers, meeting rooms, programs for all ages, and more? It's all yours at the library. Come learn about Herman Melville, genealogy, and local history. Plus, we've got superfast Wi-Fi. Best of all... it's free. Stop by!

Berkshire Museum

39 South St. | 413-443-7171 | berkshiremuseum.org

Explore art, science, and history in scenic downtown Pittsfield! World-class exhibitions and engaging programs for all ages. Aquarium, galleries, family activity center, and museum shop.

DOWNTOWN PITTSFIELD AMBASSADORS

Need information?

Ask a Downtown Pittsfield Ambassador – our walking and welcoming concierges.

They can help you find parking, offer directions and wayfinding, and provide information on dining, shopping, cultural activities, and more! Visit them at downtown events!

July - August



*Sponsored by the City of Pittsfield
and the Guardian Life Insurance
Company of America.*



Hancock Shaker Village, credit Kara Thornton

Hancock Shaker Village

1843 West Housatonic St. (Route 20)
413-443-0188 | hancockshakervillage.org
A living history museum with 20 historic buildings and gardens. Explore the Round Stone Barn and the oldest working farm in the Berkshires and visit the animals. Discover thousands of Shaker artifacts and furniture. Stroll through the Village and see why the Shakers called it the "City of Peace". Cafe & Mercantile Store open daily. See website for information on events, workshops, and exhibits.

Herman Melville's Arrowhead

Owned and operated by the Berkshire County Historical Society
780 Holmes Rd. | 413-442-1793 | berkshirehistory.org
Arrowhead was author Herman Melville's home from 1850 to 1863, where he wrote the great American novel Moby-Dick and other works. It is now home to the Berkshire County Historical Society, which offers tours, nature trails, exhibits, a museum shop, and special events and programs.

Samuel Harrison House

82 Third St. | samuelharrison.org
Reverend Samuel Harrison was a renowned 19th-century civil rights advocate, writer, and preacher in Pittsfield who served as chaplain to the legendary 54th Regiment in the Civil War and successfully fought for equal pay for Union soldiers of color. His home is now a National Historic Landmark and a place to teach the values embodied in Harrison's life.

VISUAL ARTS/PUBLIC ART

Berkshire Art Association

berkshireartassociation.org

Berkshire Art Center

13 Willard Hill Rd., Stockbridge
413-298-5252 | berkshireartcenter.org
Art programs thrive in Stockbridge and extend into Pittsfield through partners, pop-ups, and creative collaborations across our community.

The Berkshire Carousel

50 Center St. | berkshirecarousel.com | See ad below.

Berkshire Lightscares

berkshirelightscares.com
Berkshire Lightscares is lighting up the exteriors of downtown buildings and public spaces to help illuminate and energize downtown. This new artistic, energy efficient LED lighting is coordinated between buildings and allows for exciting light shows year-round. See ad on page 12.

Clock Tower Artists

75 South Church St., 3rd Floor | clocktowerartists.com

First Fridays Artswalk

413-443-6501 | firstfridaysartswalk.com
First Fridays Artswalk transforms downtown Pittsfield retailers, restaurants, and organizations into art galleries. Explore art and meet artists during opening receptions on the first Friday of the month, May through September from 5 to 8 pm, with most art on display all month long. Live music, open studios, and live art demonstrations on the first Friday. Download the free Downtown Pittsfield App in the App Store or on Google Play to take a virtual tour of art anytime on your cell phone. See ad on page 13.

Lichtenstein Center for the Arts

28 Renne Ave. | 413-499-9348 | lovepittsfield.com
Lichtenstein Center for the Arts is Pittsfield's city-owned community arts center, featuring nine artist studios, a ceramics studio, community room, and the only white-walled art gallery in Pittsfield featuring changing exhibitions, classes, performances, and more! The Lichtenstein is named in honor of Kitty Lichtenstein, an extraordinary arts benefactor in the Pittsfield community and beyond who donated this building to the City. Gallery hours: Wednesday through Friday, 11 am to 3 pm.

Pittsfield Beautiful

pittsfieldbeautiful.org
We keep Pittsfield beautiful...one flower at a time! Pittsfield Beautiful, a non-profit, volunteer-run organization, plants and maintains gardens and containers throughout the city to help Pittsfield be a truly welcoming community. We hope that through this example of community pride and service that this spirit will spread throughout Pittsfield.



FARMERS MARKET

Pittsfield Farmers Market

100 First St. | 413-344-0816 | farmersmarketpittsfield.org

Powered by Roots Rising, the Pittsfield Farmers Market is the first teen-run market in the region. A year-round market with live music, chef demos, workshops, and children's activities, the Pittsfield Farmers Market believes everyone should have access to fresh, healthy food. Find the market in the First Street Common each Saturday from 9 am to 1 pm, May through October, and in the Zion Lutheran Church each second Saturday from 9 am to 1 pm, November through April.

WELLNESS/FITNESS/RECREATION

Berkshire Family YMCA

292 North St. | 413-499-7650 | bfymca.org

Berkshire Fitness and Wellness Center

137 North St., Crawford Square
413-885-1633 | bfwstudio.com

Berkshire Yoga Dance & Fitness

55 North St., Suite 201 (above Beacon Cinema)
413-418-4001 | berkshireyogadancefitness.com
Elevate your well-being—body, mind, and soul. Join us in-studio, outdoors, or online for classes that inspire transformation and connection. Try our Discovery Pass: 3 weeks of unlimited classes, access to our On Demand Library, and a Guest Pass to share for just \$49. Start your journey with us today!

Bousquet Mountain

100 Dan Fox Dr. | 413-442-8985 | bousquetmountain.com

Bousquet Sport

101 Dan Fox Dr. | 413-499-4600 | bousquetsport.com

Pittsfield State Forest

1041 Cascade St. | 413-442-8992 | bit.ly/3w440b8
Streams, waterfalls, and flowers abound in the 65-acre Pittsfield State Forest. Camping, picnicking, and swimming at scenic Berry Pond. Watch the sun set at striking vistas from the top of Berry Mountain, accessible by automobile from April to December. Thirty miles of trails include the paved three-quarter mile Tranquility Trail.

Subscribe!
News from
The Heart of the Berkshires

Downtown Pittsfield

PITTSFIELD THE HEART OF THE BERKSHIRES

Want downtown Pittsfield products, events, and exclusive deals delivered to your inbox? Scan here for the archives

Subscribe at downtownpittsfield.com



MakersMarket



LOCAL VENDORS

FamilyFunZone

FREE FAMILY ACTIVITIES



Artswalk



ART EXHIBITS OPEN STUDIOS

FESTIVAL!

MUSIC, DANCE AND MORE!



MAY 1, JUNE 5, AUGUST 7, AND SEPT 4, 5-8 PM
LOVEPITTSFIELD.COM/FIRST-FRIDAYS

Photo credits: Jesse Tobin McCauley, Autumn Phoenix Photography, Stephanie Zollshan - *The Berkshire Eagle*, Autumn Phoenix Photography, Kimberly Gritman

PREFERRED HOTEL OF DOWNTOWN PITTSFIELD, INC.

**Holiday Inn & Suites Pittsfield-Berkshires,
an IHG Hotel**

1 West St. | 413-499-2000 | hiberkshires.com

Events - Sleeping Rooms

New Parking Garage Summer '26

Let the Holiday Inn & Suites be your home away from home.



Berkshire Lightscaapes

*Transforming
Downtown Pittsfield
with Lights!*

Take a digital tour at
bit.ly/3E8eBXv

LOVE PITTSFIELD.COM

THE VERY BEST
OF PITTSFIELD
IN ONE PLACE!



West Side Story, Barrington Stage Co. Daniel Rader

Nightlife + Arts • Outdoor Fun • Dining • Shopping
Events Calendar • 3 Hours in Pittsfield + more!



Downtown Pittsfield Inc.

Local Love

Pittsfield, MA

ADVOCACY COLLABORATION CELEBRATION

DOWNTOWNPITTSFIELD.COM

@DOWNTOWNPITTSFIELD ON FACEBOOK
AND INSTAGRAM • FIND US ON LINKEDIN



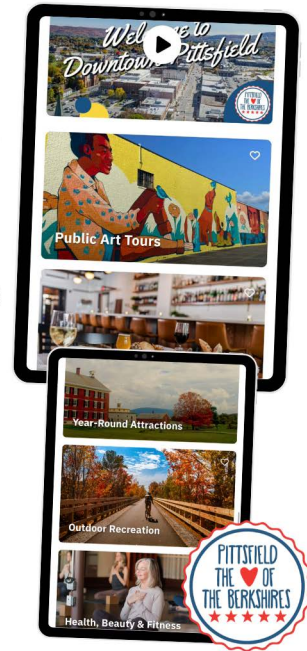
Photo credit Brian Beckett

DOWNTOWN PITTSFIELD APP



DOWNTOWN TOURS & DIRECTORIES

Murals and Public Art
Shopping & Dining
Women Owned
Downtown Events
Outdoor Recreation
Year-Round Attractions
Historical Buildings
Health, Beauty & Fitness
Berkshire Lightscaapes



App is available for FREE
in the App Store and on Google Play



ArtswalkSM

downtown pittsfield, ma

Explore artwork by dozens of artists
on the first Friday of the month,
May 1, June 5, August 7, and September 4,
from 5 to 8 pm
and on Saturday, July 11, from 1 to 4 pm

Opening Receptions
Art Making | Open Studios
Art in the Park

Download the Downtown Pittsfield App in the
App Store or on Google Play to take a virtual tour
of art anytime on your cell phone.



FirstFridaysArtswalk.com

Downtown
Pittsfield Inc.

ENTREPRENEUR MEMBERS

Explore our local, home-based,
for-profit business members!

downtownpittsfield.com/entrepreneurs



**\$99 FOR ONE YEAR MEMBERSHIP
JOIN AT DOWNTOWNPITTSFIELD.COM**



DOWNTOWN PITTSFIELD *e-gift card*

ONE CARD - OVER 2 DOZEN LOCATIONS

Retailers - Restaurants - Fitness - Entertainment

Purchase at downtownpittsfield.com



THE BERKSHIRES' ONLY 100% VEGAN RESTAURANT



THRIVE

FOOD THAT LOVES YOU BACK

Lunch & Dinner

145 Wahconah Street

www.thrivediner.com

Voted Best of The Berkshires 7 years in a row

HOT HARRY'S[®] = FRESH BURRITOS =

37 NORTH STREET, PITTSFIELD • (413) 448-6155

www.hhburritos.com

DINE IN | TAKE OUT | CATERING

DOWNTOWN DINING

101 Restaurant & Bar

1 West St. | 413-553-2251 | 101restaurantbar.com

A Little Nibble

75 South Church St. at The Clock Tower Business Park | 413-344-4554
alittlenibble.com

Angelina's

97 West Housatonic St. | 413-443-7928

100 Dalton Ave. | 413-443-9875

BB's Hot Spot at The Lantern

455 North St. | 413-464-9030 | bbshotspot.com

Brazzucas Market

75 North St. | 413-464-0049 | [instagram.com/brazzucasmercadinho](https://www.instagram.com/brazzucasmercadinho)

Dottie's Coffee Lounge

444 North St. | 413-443-1792 | dottiescoffeelounge.co

Drifters Bar & Restaurant

101 Dan Fox Dr. | 413-232-9362 | bousquetmountain.com/drifters

Espetinho Carioca

48B North St. | 413-344-9234 | espetinhocarioca.com

Hand Crafted Catering & Events

26 Dunham Mall | handcraftednyc.com | @hand.crafted.catering

Hot Harry's Burritos

37 North St. | 413-448-6155 | hotharrysburritos.com | See ad on page 14.

Hot Plate Brewing Co.

1 School St.

info@hotplatebeer.com

hotplatebeer.com

Otto's Kitchen & Comfort

95 East St. | 413-344-4748

ottoskitchen.com

Patrick's Pub

26 Bank Row | 413-499-1994

patrickspubma.com



Hot Plate Brewing Co., credit Good Bites Glass Pints



BB's Hotspot at The Lantern

Sibaritas

27 McKay St. | 413-448-8244 | sibaritascafe.com

South Street Pizza House

148 South St. | 413-499-1690

Thrive Diner

145 Wahconah St. | Wednesday - Saturday | thrivediner.com
See ad on page 14.

Tito's Mexican Bar & Grill

34 Depot St. | 413-344-4285
titomexicangrill.restaurant

WANDER Berkshires

34 Depot St., Suite 101 | 413-344-4468 | wanderberkshires.com



WANDER Berkshires, credit Jay Santangelo

DOWNTOWN SHOPPING

ANTIQUES/VINTAGE

Bomb Shack Vintage

307 North St. | [instagram.com/bombshackvintage](https://www.instagram.com/bombshackvintage)

Clark Vintage Lighting LLC

342 North St. | 413-344-4491 | clarkvintage.com

BOOKS, GIFTS, TOYS, AND PLANTS

Berkshire Museum Shop

39 South St. | 413-443-7171 | berkshiremuseum.org

Bottomless Bricks

163 South St., Suite 4 | 413-344-9259 | bottomlessbricks.com

Your premier source for new, used and rare LEGO® items, plus unforgettable birthday parties, educational workshops, and community events for all ages! See ad on page 21.

Indie Readery & Records LLC

314 North St. | 413-464-0144 | indiereadery.com

A unique, independent bookstore that combines a curated selection of books, vinyl records, and gifts.

Mana Crypt Gaming Center

55 West Housatonic St. | 413-553-3623 | manacrypt.com

See ad on front inside cover.

Museum Outlets

31 South St. at Park Square | 413-499-1818

museumoutlets.com

An eclectic retail store featuring home décor, unique accessories, and gifts, blending in distinctive wall art and custom framing.

Pixel Vault

71 Federal St. | pix3lvaultx@gmail.com | pvgames.com

Solarium Plant Shop

46 West St. | solariumplantshop.com

This & That Sports

128 Fenn St. | 413-344-4053 | thisandthatsports.com

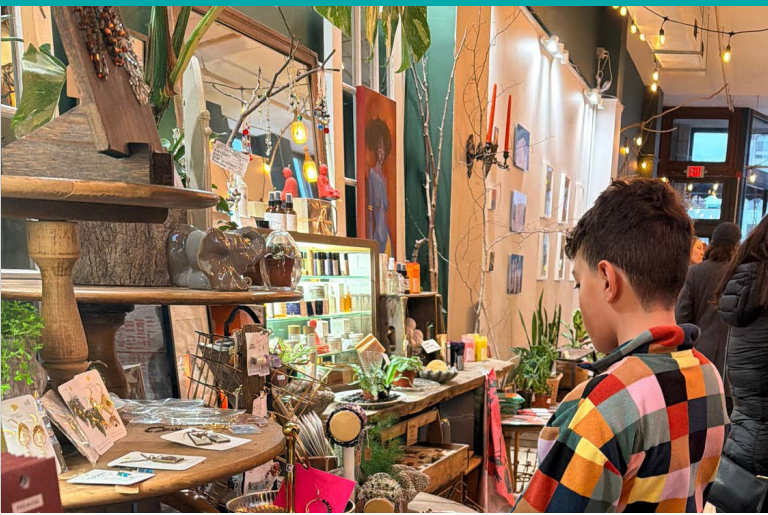
CONVENIENCE

Lipton Market North

580 North St. | 413-442-8861 | liptonenergy.com/location/liptonmart-north



Museum Outlets, credit EKRW Creative



Solarium Plant Shop, credit Jesse Tobin McCauley

CANNABIS RETAILER

Berkshire Roots

501A Dalton Ave. | 413-553-9333 | berkshireroots.com

Budhaus

239 West St. | 413-281-7394 | budha.us

Budhaus cannabis store is a small, local, women and minority owned family business. Thank you for checking us out! See ad on page 37.

CLOTHING, SHOES & ACCESSORIES

413Shirts.com

1595 East St. | 413-281-5292 | 413Shirts.com

Deidre's Special Day, Social Butterfly & Prom Central

2 South St., Suite 100 | 413-499-9959 | deidresonline.com

Kidding Around Consignment

700 North St. | 413-464-8527 | facebook.com/KiddingAroundConsignment

Peace Train Tees

139 West Housatonic St. | 413-499-1890 | peacetraintees.com

Steven Valenti's Clothing

157 North St. | 413-443-2569

facebook.com/stevenvalenticlothing

HOME FURNISHINGS & BUILDING SUPPLIES

Carr Hardware

547 North St. | 413-443-5611 | carrhardware.com | See ad on page 18.

Gutters & Siding, LLC

30 Spring St. | 413-347-9002 | 413-6GUTTER

guttersnsiding.com

Paul Rich & Sons Furniture Mattresses | Design

242 North St. | 413-443-6467 | paulrich.com

OFFICE

BBE Office Interiors

1595 East St. | 413-442-8217 | bbeoffice.com

HEALTH & BEAUTY

Chevuex Hair Clinic

100 North St., Suite 210 | 413-499-1865 | chevuexhairclinic.com

The Hair Studio

10 Bank Row | 413-442-6570 | frankshairstudio.com

MD Esthetics

75 North St., Suite 170B, Central Block Building
413-441-8453 | mdestheticsus.com | See ad on page 21.

Skin + Tonix

100 North St., Suite 312 | skinandtonix.com

CARR HARDWARE

Experience Matters.
Trusted Brands.

Local Business,
Local Focus
since 1928.

CARR HARDWARE PITTSFIELD 547 North Street 413.443.5611

carrhardware.com



Indie Readeary & Records LLC. credit Autumn Phoenix

SPECIALTY

Independent Mobility

453 North St. | 413-499-4846 | imscooters.com

Local Appliance Repair

419 North St. | 413-464-0055 | localappliance413.com

Miller Supply

205 West St. | 413-442-6988 | millerartandframe.com

Nene's Deco

144 South St. | 413-344-9755 | nenesdeco.com

Nene's Deco offers planning and decorating for all types of events, from weddings to birthdays and more. We travel!

QuickFix Mobile Repair And More

71 Federal St. | 413-347-8028 | quickfixmobilerepairandmore.com

Sally Tiska Rice - Berkshire Rolling Hills Art

75 South Church St., 3rd Floor, Studio 302 | 413-446-8469 | sallytiskarice.com



Sally Tiska Rice - Berkshire Rolling Hills Art

**Get Around
Pittsfield
& Beyond!**



Local routes
Regional connections
Berkshire public transit



Get the details at berkshirerta.gov

BUY/SELL/TRADE • PARTIES • EVENTS



BOTTOMLESS BRICKS

**163 South Street
Pittsfield, MA**

www.BottomlessBricks.com

PARTS & PIECES • MINIFIGURES®



THECOLLAB^{HD}

RECORDING STUDIO RATES

RECORDING \$80 / 2 HOURS

\$150 / 4 HOURS

MIXING \$10 / TRACK STEM

MASTER \$60 / SONG



EMAIL MARK@THECOLLAB413.COM
FOR ALL INQUIRIES

152 NORTH ST.
SUITE 47
PITTSFIELD, MA

MD

ESTHETICS

WHERE MEDICAL EXPERTISE
MEETS ARTFUL RESULTS.

We Specialize in:

- Injectables (Botox & Fillers)
- Skin Rejuvenation
- Laser Hair Removal
- Medical-grade Facials
- And MORE!



New Patient Savings:

- ✓ **\$11/unit Tox**
(reg. \$13/unit)
- ✓ **\$200 Off Filler**
(reg. \$725/syringe)

MD Esthetics Pittsfield
 75 North St. Suite 170B
 Pittsfield, MA 01201

(413) 418-3301

SCAN TO BOOK



MDESTHETICSUS.COM

DOWNTOWN MAP



Scan here to
learn more
about downtown!



**PARKING
DOWNTOWN
FREE AFTER 4 PM
AND ON WEEKENDS
& HOLIDAYS**



Pay-by-Plate Parking Monday - Friday, 8 am - 4 pm

How to Pay

1. Park vehicle in space
2. **ALWAYS ENTER YOUR PLATE NUMBER** – even for the first **FREE 30 minutes**
3. Pay parking fee at meter or use app
4. Retain receipt for proof of payment, no need to display ticket on dash

Ways to Pay

1. Meters – coin and credit card only
2. Passport Parking App – ppprk.com

North St. parking = Zone 1012 (\$1/hour, 3-hour limit)

Additional street parking = Zone 1015 (\$1/hour)

Lot parking = Zone 1014 (50 cents/hour)

Parking is always free after 4 pm and on weekends and holidays.

There is also free timed parking for nearly 400 spaces downtown

For parking maps and more information: downtownpittsfield.com/park

WHERE NATURE

Downtown Pittsfield is the place where diverse interests converge in a vibrant, walkable neighborhood filled with public art, shopping, dining, entertainment, and community.

The City of Pittsfield covers over 42 square miles in the Berkshires, including two square miles of water. Travel in any direction from the city's downtown and you will find peaceful walking trails, scenic picnic spots, or spaces for recreation and relaxation. Spot wildlife, paddle out on the lake, or go for a bike ride on the **Ashuwillticook Rail Trail**.



The Ashuwillticook Rail Trail, credit Good Bites & Glass Pints

Once you've had your fill of nature, (if that's possible!), come back to our historic ,downtown (the Park Square Historic District) and take in the beautiful architecture dating back to the 1800s. Today, this ornate architecture from almost two centuries ago in some cases, is integrated with modern murals celebrating the Pittsfield community, both our past and our future. To complement our world-class professional theatres downtown, **Barrington Stage Company** and **the Colonial Theatre**, we've partnered with local organizations to activate public spaces downtown with exciting additions and entertainment. **Dunham Mall**, a pedestrian corridor that connects North Street with City Hall, was recently reinvigorated with trees, plantings, a mosaic mural, and picnic table-style accessible seating. Throughout the warmer months, this corridor is activated with free live music, beer gardens with Hot Plate Brewing Co., and dance programming in a variety of styles. Liberty Street, a small street tucked just off of North Street, near **Tito's Mexican Bar & Grill** and **Wander**, is activated with late night dance parties at Depot After Dark. We love to bring people downtown to celebrate all that we have to offer at community celebrations such as the **First Fridays at Five**, the **10x10 Upstreet Arts Festival**, and **Downtown Pittsfield... It's Alive!** And this year, we are excited to bring you the first annual **Local Love Arts Festival** celebrating all things local.



Pontoosuc Lake, credit Kara Thornton; Canoe Meadows, credit Kara Thornton; Clapp Park, credit Kim Gritman

and CITY MEET

The free **Downtown Pittsfield App** is a great way to explore Pittsfield with its directories and tours of public art and murals, local architecture, parks and recreation areas, year-round attractions, downtown events, shopping, dining, and so much more!

Explore highlights of art and nature below!

Pittsfield is home to a vibrant visual arts scene, with public art, large scale murals, the **Pittsfield Paintbox Project**, artist studios, and the **First Fridays Artwalk**.

Complete your Pittsfield art tour at the Lichtenstein Center for the Arts, a city-owned community arts center and gallery which features local and regional artists in rotating art exhibitions. After nightfall, check out **Berkshire Lightscapes** which illuminates downtown with artistic, coordinated lighting on the exteriors of downtown buildings and public spaces.



Lichtenstein Center for the Arts, credit Jesse Tobin McCauley



"Sisterhood" Mural by Silvia Lopez Chavez, credit Mario E. Ramirez, tostfilms.
"Untitled" Mural by qwynto, credit Kim Gritman

Connect with nature in all four seasons. We are home to **Pontoosuc** and **Onota Lake**, the **Pittsfield State Forest**, multiple conservation areas, **Bousquet Mountain**, and Berkshire County's largest skate and BMX park, the **Pittsfield Skate Plaza**. **Clapp Park** and **The Common** feature splash pads in the summer, and in the winter, **Osceola** and **Clapp parks** provide the ideal spot for sledding and tubing. And we would be remiss not to mention the breathtaking foliage in the fall!

DOWNTOWN LIVING & WORKING

ACCOUNTING/FINANCIAL

Adelson & Company PC

100 North St. | 413-443-6408 | adelsoncpa.com

Adirondack Payroll Services

65 Bartlett Ave. | 413-236-0950 | adirondackpayroll.com

Apple & Albano PC, CPAs

373 South St. | 413-443-4438 | appleandalbano.com

Braze & Huban, CPAs

55 Wendell Ave. | 413-443-9157 | brazeehuban.com

KB Accounting

100 North St., Suite 205 | 413-464-0245 | kbaccountingpittsfield.com

Lombardi & Keegan

35 Pearl St. | 413-499-3733 | lckcpa.com

Quinn & Killeen, PC

4 Second St. | 413-443-7366 | quinnkilleen.com

ARCHITECTURE

Hill Engineers, Architects, Planners, Inc.

50 Depot St., Dalton | 413-684-0925 | hillengineers.com
See ad on page 27.

AUTOMOTIVE

Haddad Dealerships of the Berkshires

130 Pittsfield-Lenox Rd. | 413-445-4535 | haddadauto.com

Lipton Car Wash

1035 South St. | 413-307-8830 | liptoncarwash.com

BANKS/ATMS

Beacon Bank

66 West St. | 800-773-5601 | beaconbank.com | See ad on page 27.

ARCHITECTURE ■ ENGINEERING ■ CIVIL/SURVEY ■ PLANNING



(413)684-0925

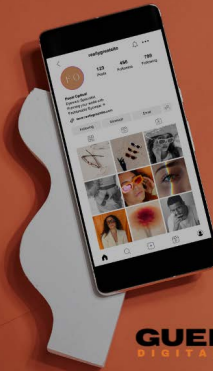
50 Depot St. Dalton, MA.

hillengineers.com

IS YOUR BUSINESS
IN NEED OF A
MARKETING MAKEOVER?

**LET US
HELP.**

Social Media Management
Paid Ads
Search Engine Optimization
Web Dev + Design
Affiliate Marketing
Public Relations
+ More



Visit Our Site:



GUELCE **GM**
DIGITAL COLLABORATIVE

Our name
has changed.
Our commitment
hasn't.

Berkshire Bank is now Beacon Bank.
Built on nearly 200 years of financial
strength and experience guided by a
unique local approach that puts
you first.

 **BeaconBank**

BeaconBank.com

Rev. 03/26

Member FDIC  Equal Housing Lender

Greylock Federal Credit Union

150 West St. | 413-236-4000 | Greylock.org

Here to serve as a trusted financial partner. Opportunity Grows Here.®

Lee Bank

180 South St. | 413-445-7270 | leebank.com

MountainOne

111 Silver Lake Blvd. | 855-444-6861 | mountainone.com

NBT Bank

75 North St. | 413-448-6162 | nbtbank.com

Pittsfield Cooperative Bank

70 South St. | 413-447-7304 | pittsfieldcoop.com

BUSINESS SERVICES

AccessPlus

340 McKinstry Ave., Chicopee | 877-4-Access | getaccessplus.com

Berkshire Black Economic Council

33 Dunham Mall, Suite 101 | contact@berkshirebec.org
berkshirebec.org

Berkshire Brochure Display

413-298-3999 | berkshirebrochures.com

Berkshire Graphics, Inc.

239 Wahconah St. #101 | 413-442-3569 | berkshiregraphics.com
See ad below.

Crescent Creamery

85 S. Onota St. | 413-445-4548 | 800-221-MILK | crescentcreamery.com

Dulye & Co.

100 North St., Suite 402 | dulye.com

Elegant Stitches

237 First St. | 413-447-9452 | elegantstitchesinc.com

Framework Coworking by Downtown Pittsfield, Inc.

437 North St. | 413-443-6501 | downtownpittsfield.com



Berkshire GRAPHICS INC.

Canon
AUTHORIZED DEALER

Serving Berkshire County as your copier and office supply dealer since 1976.

Affordable office supplies, printers, copiers, and repairs.

Berkshire Graphics Inc.
239 Wahconah St., Pittsfield
413-442-3569
www.berkshiregraphics.com

Guelce Collaborative Marketing

152 North St., Suite 47 | 413-822-5574 | guelcecollaborative.com

See ad on page 27.

Independent Connections

579 Fenn St. | 833-463-7638 | independent-connections.com

Magnetworks

magnetworks.co

Nonprofit Center of the Berkshires

413-441-9542 | npcberkshires.org

Right Light Productions

395 North St., Suite 260 | 413-281-6511 | rightlightproductions.com

Sourcepass

1 Fenn St. | 413-499-0607 | sourcepass.com/managed-it-services-pittsfield

THECOLLAB

152 North St., Suite 47 | 413-464-1695 | thecollab413.com

See ad on page 21.

CHAMBERS OF COMMERCE

1Berkshire

137 North St., Suite 200, Crawford Square | 413-499-1600
1berkshire.com

Lee Chamber of Commerce

leechamber.org

Lenox Chamber of Commerce & Visitor Center

4 Housatonic St., Lenox | 413-637-3646 | lenox.org

North Adams Chamber of Commerce

nachamber.org

Southern Berkshire Chamber of Commerce

southernberkshirechamber.com

Stockbridge Chamber of Commerce

stockbridgechamber.org

Williamstown Chamber of Commerce

destinationwilliamstown.org



WE ARE HIRING!

DO WORK THAT MATTERS

servicenet.org/hiring

servicenet
innovative mental health and human services

APPLY NOW

CIVIC & COMMUNITY

AdLib, Inc.

215 North St. | 413-442-7047 | adlibcil.org

Berkshire Community Action Council

1531 East St. | 14 Maplewood Ave. | 413-445-4503 | bcacinc.org

Berkshire County Arc, Inc.

395 South St. | 413-499-4241 | bcarc.org | See ad below.

Berkshire County Sheriff's Office

467 Cheshire Rd. | 413-443-7220 | bcsoma.org

Berkshire Immigrant Center

141 North St., Suite 303 | 413-445-4881 | berkshireic.org

Berkshire Pride

34 Depot St., Suite 207 | info@berkshirepride.org | berkshirepride.org

Berkshire Talking Chronicle WRRS 104.3FM LP

75 South Church St., Suite 201 | 413-442-1562 | ucpwma.org

Berkshire United Way

200 South St. | 413-442-6948 | berkshireunitedway.org

We amplify community voices, invest in strong nonprofits, and mobilize volunteers to build a thriving Berkshires. United is the Way.

Boys and Girls Club of the Berkshires

16 Melville St. | 413-448-8258

bgcberkshires.org/bgcpittsfield

Central Berkshire Habitat for Humanity

314 Columbus Ave. | 413-442-0003 | berkshirehabitat.org

Christian Center

193 Robbins Ave. | 413-443-2828 | christiancenterpittsfield.org

Common Room at Zion Lutheran Church

74 First St. | 413-442-3525 | zionlutheranpittsfield.org

Elizabeth Freeman Center

66 Allen St. | 413-499-2425 | elizabethfreemancenter.org

Gladys Allen Brigham Community Center

165 East St. | 413-442-5174 | brighamcenter.org

Hearthway, Inc.

1 Fenn St. | 413-499-1630 | hearthway.org

Jewish Federation of the Berkshires, Inc.

196 South St. | 413-442-4360 | jewishberkshires.org

Latinas413

139 North St. | 413-679-1301 | info@latin413.org | latin413.org

Supporting the disabilities community through a range of programs:

- Residential
- Day Services
- Employment
- Family Support
- Adult Family Care
- And More

Learn more
www.bcarc.org

BC Arc
Serving the Berkshires
& Pioneer Valley
Berkshire County Arc



Hillcrest Educational Foundation is a private not-for-profit agency serving students from across the country. Hillcrest was started as an organization that provided residential programs for students with complex psychiatric, behavioral and/or developmental disorders, including autism, and a variety of high risk behaviors. While the agency still provides these residential services, today Hillcrest also offers nonresidential day programs and services for emotionally/behaviorally disturbed students at their Hillcrest Academy, as well as general family dentistry at Hillcrest Dental Care.

The programs and services provided by the Hillcrest Educational Foundation are state licensed and certified, and Hillcrest Educational Centers is accredited in behavioral health care by the Joint Commission.

Living in Recovery

75 North St., McKay Street Entrance
413-570-8243 | livinginrecoverypittsfield.org | See ad below.

Mill Town Foundation

100 West St., Suite 210 | andy@milltownfoundation.org
milltownfoundation.org

NAMI Berkshire County

333 East St., Room 417 | 413-443-1666 | namibc.org

Pittsfield Parade Committee

P.O. Box 1738 | 413-447-7763 | pittsfieldparadecommittee@gmail.com
pittsfieldparade.com

Pittsfield Masonic Building

116 South St.

Q-MoB (Queer Men of the Berkshires)

queermenoftheberkshires@gmail.com | queermenoftheberkshires.org

Roots Rising

923 Barker Rd. | 413-344-0816 | rootsrising.org

Retired Senior Volunteer Program (RSVP)

16 Bartlett Ave. | 413-499-9345
www.pittsfieldma.gov/363/Retired-Senior-Volunteer-Program-RSVP
Berkshire County's RSVP provides recruitment, training, and placement of persons 55 years of age and over as volunteers.

ServiceNet, Inc.

139 North St. | 413-442-4003 | servicenet.org | See ad on page 29.

Soldier On

Corporate Office 290 Merrill Rd. | info@wesoldieron.org | wesoldieron.org

The Brien Center

359 Fenn St. | 413-499-0412 | 24 Hour Crisis Hotline: 800-252-0227
briencenter.org

UCP of Western Massachusetts

208 West St. | 413-442-1562 | ucpwma.org



Living in Recovery provides a safe, inclusive, and non-judgmental environment to aid the entire recovery community.



LIVING IN RECOVERY
A peer-led, peer-driven community

LOCATED IN DOWNTOWN PITTSFIELD
Drop in on an event or become a member
livinginrecoverypittsfield.org

Advancing health and wellness for everyone in our community.

berkshirehealthsystems.org



Fairview Hospital



Berkshire Medical Center



Berkshire Health Systems



Berkshire Health Systems

UpSide413

1 Fenn St., 4th Floor | 413-443-7138 | upside413.org
HUD Approved Housing Counseling Agency, Housing and Consumer Education Center, Foreclosure Prevention, Consumer Services, Dispute Resolution Center (Mediation Services), Tenancy Preservation Program, Housing Search, Youth Services

Westside Legends, Inc.

437 North St. | westsidelegends.org

EDUCATION

Berkshire Community College

1350 West St. | 413-236-1000 | berkshirecc.edu
Berkshire Community College - making higher education accessible to all residents of Berkshire County and beyond with free community college. See ad on page 35.

OLLI (Osher Lifelong Learning Institute at Berkshire Community College)

1350 West St. | 413-236-2190 | berkshireolli.org
See ad below.

EMPLOYMENT

MassHire Berkshire Career Center

160 North St. | 413-499-2220 | masshireberkshirecc.com

Molari Employment and Healthcare Services

166 East St. | 413-499-4546 | molariinc.com

ENGINEERING/MANUFACTURING

Interprint, Inc.

101 Central Berkshire Blvd. | 413-443-4733 | interprint.com

J.H. Maxymillian, Inc.

1801 East St. | 413-499-3050 | maxymillian.com

FUNERAL

Dery Funeral Home

54 Bradford St. | 413-443-9151 | deryfuneralhome.com

GRAPHIC DESIGN & PRINTING

RB Design Co.

regina@rbdesignco.com

RSI Signs

20 Yorkshire Ave. | 413-447-8286 | rsi-signs.com

Qualprint

3 Frederico Dr. | 800-547-7468 | qualprint.com
For over 60 years we've been in the Berkshires. Specializing in brochures, magazines, catalogs, annual reports, and so much more.

INSURANCE

Berkshire Fairfield Insurance Agency/Scarafoni Financial Group (An Alera Group Company)

128 South St. | 413-443-5300 | berkshirefairfield.aleragroup.com

Guardian Life Insurance Company of America

700 South St. | 413-499-4321 | guardianlife.com
See ad on page 37.

Wheeler & Taylor, Inc.

402 East St. | 413-448-8224 | wheelerataylor.com

LEGAL

Aaronson & Mach, P.C.

57 Wendell Ave. | 413-499-1200 | aaronsonmach.com
Experienced law firm specializing in residential and commercial real estate, business matters, and estate planning and administration.

Cohen Kinne Valicenti & Cook LLP

66 West St., Suite 201 | 413-443-9399 | cohenkinne.com



In-person and online non-credit courses, events, and community

OLLI berkshireolli.org

OLLI at BCC is sponsored in part by  Berkshire Health Systems

OSHER LIFELONG LEARNING INSTITUTE AT BERKSHIRE COMMUNITY COLLEGE



POWERED BY THE BERKSHIRES

MADE FOR WHAT'S NEXT

Apply at berkshirecc.edu

MEDIA

Berkshire Eagle

75 South Church St. | 413-447-7311 | berkshireeagle.com

Photonics Media / Laurin Publishing Co., Inc.

100 West St. | 413-499-0514 | photonics.com

Talon Media

75 South Church St. | 413-496-6322 | talonmediaagency.com

Townsquare Media Berkshire

211 Jason St. | 413-499-3333 | live959.com

MEDICAL SERVICES

Berkshire Health Systems

Berkshire Medical Center 24/7 Emergency Care

725 North St. | 413-447-2000

Berkshire Health Systems Urgent Care | 505 East St. | 413-997-0930

Berkshirehealthsystems.org | See ad on page 33.

Berkshire Orthopaedic Associates, Inc

24 Park St. | 413-499-6600 | berkshireorthopaedics.com

CHP Berkshires

Pittsfield Neighborhood Health Center | 510 North St., Ste. 1
413-447-2351

Berkshire Pediatrics | 777 North St., Suite 305 | 413-499-8531
chpberkshires.org

Family Practice Associates

20 Elm St. | 413-442-1019 | fpadoctors.com

Hillcrest Educational Centers

788 South St. | 413-499-7924 | hillcrestec.org | See ad page 31.

Mind & Melody Therapy Services, LLC

22 Gordon St., Berryman Professional Building | 413-216-0225 |
mindmelodytherapy.com

MOVING & STORAGE

All-Ways Moving & Storage Co.

241 W. Housatonic St. | 413-499-1577 | allwaysmovingstorage.com

Licensed, Bonded, Insured Moving and Storage Company. Expert residential and commercial services, including premium receiving, inspection, and white glove delivery.

MI-BOX of Central & Western Massachusetts

241 Route 12., S Fitzwilliam, NH 03447 | 978-300-0404 | getmibox.com

REALTY, PROPERTY MANAGEMENT

Allegrone Companies

Berkshire Design Center, 150 Pittsfield Rd., Suite A, Lenox
413-997-9200 | allegrone.com



At Guardian, we're proud
of our commitment
to the Berkshires.

We're always looking to attract, develop, reward, and retain the best and brightest talent. Consider a career with Guardian. We offer comprehensive benefits, competitive compensation, and a range of professional development options.

The Guardian Life Insurance Company of America | guardianlife.com

GUARDIAN® is a registered trademark of The Guardian Life Insurance Company of America®.

Copyright © 2025 The Guardian Life Insurance Company of America.

7720283.1 (Exp 3/27) | New York, NY

budhaus

239 West St. in Pittsfield



Elevated flower
grown on-site



1:1 guidance from
knowledgeable staff



Mon-Sat 9a-10p
Sun 10a-7p

Please consume responsibly. Marijuana can impair concentration, coordination and judgment. Do not operate a vehicle or machinery under the influence of this drug. For use only by adults 21 years of age or older. Keep out of the reach of children.

COME
BY

Blueprint Property Group

100 West St. | 413-242-9070 | www.blueprintproperty.group

Brotherhood Building - GDL Associates

141 North St. | info@bluesware.com

Capitol Square Associates

379 North St. | 413-442-5568

CT Management Group

37 Main St., North Adams | 413-664-4539 | ctmanagementgroup.com

Maplewood Association Trust

33 Maplewood Ave. #101

Mill Town Capital

100 West St., Suite 210 | info@milltowncapital.com | milltowncapital.com

Nord Strasse LLC - Dennis McIntosh

nordstrasselc@gmail.com

Steve Oakes

Crawford Square | contactsteveoakes@gmail.com

Teton Management Corporation

PO Box 2863 | 413-442-5569 | <https://teton.management>

RELIGIOUS INSTITUTIONS

Cathedral of the Beloved

413-344-8262 | cathedralofthebeloved.org

First United Methodist Church

55 Fenn St. | 413-499-0866 | fumcpittsfield.org

St. Joseph's Church

414 North St. | 413-445-5789 | stjoepittsfield.com

St. Stephen's Episcopal Church

67 East St. | 413-448-8276 | ststephenspittsfield.org

Unitarian Universalist Church of Pittsfield

175 Wendell Ave. | 413-443-7903 | uupittsfield.org

United Church of Christ Pittsfield

110 South St. | 413-442-7357 | uccpittsfield.org

Zion Lutheran Church, ELCA

74 First St. | 413-442-3525 | zionlutheranpittsfield.org

SECURITY

New England Dynamark Security

55 Church St. | 413-442-5647 | nedynamark.com

TRANSPORTATION

AIR

Pittsfield Municipal Airport

www.pittsfieldma.gov/161/Airport

Regional general aviation airport, owned and operated by the City of Pittsfield, offers business and casual travel access to the region via private and chartered aircraft ranging from single engine piston to multi-engine jet. The airport also has a flight instructor at the Fixed Based Operator, Lyon Aviation, and scenic flights available.

GROUND

Berkshire Regional Transit Authority

Intermodal Transportation Center

1 Columbus Ave. | 413-499-2782 | berkshirerta.com

Transportation hub of the Berkshires, offering train, bus, and taxi service. Peter Pan or Greyhound bus (Intercity); Amtrak train (Lake Shore Limited); BRTA buses (Berkshire County wide). See ad on page 21.

Link 413

Link 413 is coach bus service connecting the Berkshires to Greenfield and Northampton. Hop on and explore! Bit.ly/Link413

UTILITIES/ENERGY

Lipton Energy

458 South St. | 413-443-9191 | liptonenergy.com



A COUNTY-WIDE CELEBRATION OF THE ARTS

OPEN STUDIOS, GALLERY TALKS, THEATER, PERFORMANCES & MORE!

ANNUAL EVENT
Stay tuned for MAY 2027!

Mass Cultural Council BRPC the berkshires

CULTURAL DISTRICTS OF THE BERKSHIRES

NORTH ADAMS WILLIAMSTOWN PITTSFIELD LENEX GREAT BARRINGTON

BERKSHIRES.ORG/ARTWEEK-BERKSHIRES



BERKSHIRE COMMUNITY COLLEGE

Your New Career & Professional Development Starts Here.

berkshirecc.edu/workforce

DOWNTOWN DIRECTORY

*Denotes Downtown Pittsfield, Inc. Membership

ACCOUNTING/FINANCIAL - P. 26

*Adelson & Company PC
*Adirondack Payroll Services
Ameriprise Financial Services
*Apple & Albano PC
Barry Clairmont CPA, PC
Berkshire Merchant Services
Berkshire Wealth Advisors of Raymond James
Boston Harbor Wealth Advisors | Raymond James
*Brazee & Huban, CPAs
D & Dee Realty & Tax Service
Dana Carpenter, Certified Financial Planner
Dollars & Sense
Edward Baptiste, Liberty Advisors
Edward Jones
Elie El Saddik, CPA
Financial Firebird Corporation
Hanley & Associates, LLC
H&R Block
Jackson Hewitt Tax Service
*KB Accounting
Kirby Investment Strategies, LLC
Kushi & Company, PC
*Lombardi & Keegan
New England Financial
Northwestern Mutual
October Mountain Financial Advisors
Paul J. Zdanis C.P.A.
Principal Financial Group
*Quinn & Killeen, PC
RBC Wealth Management
Smith, Watson & Company, LLP
Tax Comp, Inc.
Universal Payroll Associates, Inc.
Wells Fargo Advisors

ARCHITECTURE - P. 26

Barry Architects, Inc.
Berkshire Design, Inc. & Bradley Architects, Inc.
BlueLine Design, Inc.
EDM - architecture, engineering, & management
Group AU (Architecture + Urbanism)
*Hill Engineers, Architects, Planners, Inc.

AUTOMOTIVE - P. 26

Advance Auto Parts
Affordable Mobile Detailing LLC
Almeida Auto Body
Art Johnson Motor Car Co.
Berkshire County Auto Repair
Draeger Ignition Interlock
Duder's Garage
Firestone Complete Auto Care
Fred Santora Auto Repairs
*Haddad Dealerships of the Berkshires
Bella Nissan of Pittsfield
Ken's Auto Upholstering Co.
*Lipton Car Wash
*Lipton Mart
New England Automotive
O'Reilly Auto Parts
Pittsfield Tire & Auto Service
Rapid Radiator Repair
South Street Services
Sunoco

BANKS/ATMS - P. 26

*Beacon Bank
*Greylock Federal Credit Union
*Lee Bank
*MountainOne
MyCom Federal Credit Union
*NBT Bank
*Pittsfield Cooperative Bank

BUSINESS SERVICES - P. 28

*1Berkshire
*AccessPlus
B&G Restaurant Supply
*BBE Office Interiors
*Berkshire Black Economic Council
Berkshire Business and Professional Women
*Berkshire Brochure Display
Berkshire Innovation Center
Clayson Creative
*Crescent Creamery
*Dulye & Co./ Dulye Leadership Experience
*Elegant Stitches
*Framework by Downtown Pittsfield, Inc.
*Guelce Collaborative Marketing
*Independent Connections
*Lee Chamber of Commerce
*Lenox Chamber of Commerce
*Magnetnetworks
Massachusetts Small Business Development
Center
*Mill Town Foundation
*Nonprofit Center of the Berkshires
*North Adams Chamber of Commerce
*Right Light Productions
Rock Business Solutions, Inc.
*Southern Berkshire Chamber of Commerce
*Stockbridge Chamber of Commerce
*THECOLLAB
*Williamstown Chamber of Commerce

CIVIC & COMMUNITY - P. 30

*1Berkshire
18 Degrees Family Services for Western MA
*AdLib, Inc.
Berkshire AA Intergroup
*Berkshire Community Action Council
Berkshire Conservation District
*Berkshire County Arc, Inc.
*Berkshire County Arc, Inc., Northview Program
Berkshire County District Attorney's Office
Berkshire County Juvenile Court
Berkshire County Kids' Place
Berkshire County Retirement System
*Berkshire County Sheriff's Office
Berkshire Environmental Action Team
BFAIR, Inc.
*Berkshire Family YMCA
*Berkshire Immigrant Center
Berkshire Pathways / Viability, Inc
*Berkshire Pride
Berkshire Regional Planning Commission: BRPC
*Berkshire Talking Chronicle WRRS 104.3FM LP
*Berkshire United Way
*Boys and Girls Club of the Berkshires
*Brien Center, The
*Central Berkshire Habitat for Humanity
Child Care of the Berkshires
Child Development and Education, Inc.
*Christian Center
*City of Pittsfield
Civitan Club of the Berkshires
*Common Room at Zion Lutheran Church
DTA Pittsfield (Massachusetts Department of
Transitional Assistance)
Department of Children and Families
*Downtown Pittsfield Cultural Association
*Downtown Pittsfield, Inc.
*Elizabeth Freeman Center
Feigenbaum Foundation
*Gladys Allen Brigham Community Center
Goodwill Industries of the Berkshires and
Southern Vermont

Guidewire, Inc.
Healthy Families - Child Care of the
Berkshires
*Hearthway, Inc.
*Hillcrest Educational Centers
Housatonic Valley Association
International Brotherhood of Electrical
Workers
Irish American Club of Berkshire County
*Jewish Federation of the Berkshires, Inc.
*Latinas413/Creahub Makerspace
*Living In Recovery
Massachusetts Nursing Association
Massachusetts Rehabilitation Commission
Massachusetts Teachers Association
*Mill Town Foundation
*NAMI Berkshire County
OUR Resurge / Roots & Dreams and Mustard
Seeds Inc.
Pathlight / Autism Connections
*Pittsfield Beautiful
Pittsfield Fire Department Headquarters
Pittsfield Islamic Cultural Center
*Pittsfield Masonic Building
*Pittsfield Parade Committee
Pittsfield Police Department
Pittsfield Public Schools Administration
Building
Pittsfield Retirement Board
Pregnancy Support Services of Berkshire
County, Inc.

*Q-MoB (Queer Men of the Berkshires)
Ralph J. Froio Senior Center
*Representative Tricia Farley-Bouvier
*Roots Rising
Rotary Club of Pittsfield
*Retired Senior Volunteer Program (RSVP)
*ServiceNet, Inc.
Seven Hills Child Care Resources
*Soldier On
South Community Food Pantry
Stewards of H.O.P.E.
U.S. Representative Richard Neal
*UCP of Western Massachusetts
*UpSide413
Veterans Community Care Center
Viability, Inc
Western Massachusetts Recovery Learning
Community
*Westside Legends, Inc
Whole Heart Homecare, LLC
WIC (Berkshire North WIC)
Wildflower Alliance

COMPUTERS, COPIERS & TECHNOLOGY - P. 28

*AccessPlus
Anteris
Berkshire Graphics, Inc.
DataArt Pittsfield
Dominion Dealer Solutions
*Independent Connections
MacFarlane Office Products, Inc.
*QuickFix Mobile Repair and More
Repeat Business Systems
Rock Business Solutions, Inc.
*Sourcepass
Synagex Modern IT
VoiceAGE Clinical Dictation

DINING - P. 15

American

*101 Restaurant & Bar
*Drifters Bar & Restaurant
Highland Restaurant
Hot Dog Ranch
*Otto's Kitchen & Comfort

*Patrick's Pub
Soda Chef

Asian

Golden Phoenix
Vong's Thai Cuisine

Bar

*101 Restaurant & Bar
*BB's Hot Spot at "The Lantern"
District Kitchen + Bar
*Drifters Bar & Restaurant
Highland Restaurant
Hot Dog Ranch
*Hot Plate Brewing Co.
IZTAC Mexican Restaurant Columna LLC
Madison Cafe
Methuselah Bar and Lounge
*Patrick's Pub
RARE 297 Steakhouse
RJ'S Restaurant
*Thistle & Mirth
*Tito's Mexican Bar & Grill

Café

*A Little Nibble
*Dottie's Coffee Lounge
* Hand Crafted Catering & Events
*WANDER Berkshires

Coffee & Baked Goods

*Dottie's Coffee Lounge
Dunkin' Donuts
Sherri and Cindy's Coffee Shop (at the
Intermodal Center)
*WANDER Berkshires

Deli

*Angelina's
Doc's Deli
Subway

Fast Food

Burger King
Krispy Krunchy Chicken (inside A-Mart)

Gastropub

District Kitchen & Bar
Methuselah Bar and Lounge

Ice Cream

Ben & Jerry's
What's the Scoop? (Beacon Cinema lobby)

Indian

House of India

Italian

Brooklyn's Best
Highland Restaurant
RJ'S Restaurant
*Sibaritas Italian Fusion

Latin American

*Brazucas Market
*Espetinho Carioca
IZTAC Mexican Restaurant Columna LLC
*Hot Harry's Burritos
Placita Latina Salvadoran & Mexican Cuisine
*Tito's Mexican Bar & Grill

Pizza

Empire Pizza
Liberty Pizza
*South Street Pizza House
Thistle & Mirth

Specialty

*BB's Hot Spot at "The Lantern"
*Dre's Global Kitchen
RARE 297 Steakhouse
Sofra Turkish Mediterranean Grill

Vegan

*Thrive Diner

EDUCATION - P. 34

*BeatNest
*Berkshire Art Center (BAC)
*Berkshire Community College
*Berkshire Music School
Cantarella School of Dance
*Osher Lifelong Learning Institute
Ready Set Learn Preschool
Terpsichore Dance Center
William Stickney Pittsfield
Adult Learning Center

EMPLOYMENT - P. 34

*MassHire Berkshire Career Center
*MOLARI Employment and HealthCare Services

ENTERTAINMENT/THEATER/ CULTURE/ARTS - P. 6

Albany Berkshire Ballet
Arts in Recovery for Youth (AIRY)
*Barrington Stage Company
*BeatNest
*Berkshire Art Association
*Berkshire Art Center (BAC)
*Berkshire Carousel
Berkshire Choral International
*Berkshire County Historical Society at Arrowhead
*Berkshire Lightscapes
*Berkshire Museum
*Berkshire Music School
Berkshire Opera Festival
*Berkshire Theatre Group / Colonial Theatre
*Berkshires Jazz, Inc.
*Clock Tower Artists
*Diane Firtell Designs
Eagles Community Band
empty set projects (art studio/gallery)
*First Fridays Artwalk
*Hancock Shaker Village
*Lichtenstein Center for the Arts
NUarts Studios & Gallery
*Phoenix Theatres Beacon Cinema
Sanctum Gallery
SML, Inc. Moscow Ballet
Samuel Harrison House
South Mountain Concerts

FARMERS MARKET - P. 10

*Pittsfield Farmers Market

FUNERAL - P. 35

*Dery Funeral Home
Devanny-Condron Funeral Home
Dwyer Funeral Home
Dwyer Wellington Family Funeral Home
Flynn & Dagnoli-Bencivenga Funeral Home

HEALTH, BEAUTY & FITNESS - P. 10 & P. 19

Abbey Cutters
Advanced Image Artistry, Inc.
All Star Cuts 2 Barber Shop
Angel Black Hypnotherapy
Aruni Nan Futuronsky Life Works Coach
Balance & Bliss Wellness
Beloved Massage Therapy by Carissa

*Berkshire Family YMCA
*Berkshire Fitness & Wellness Center
Berkshire GreenLeaf & Wellness®, LLC
Berkshire Healing Arts
Berkshire Nautilus
*Berkshire Yoga Dance & Fitness
Bodywork by Chelsay
*Bousquet Sport
*Cheveux Hair Clinic
Community Fitness Pittsfield (Crossfit Pittsfield)
Davis Personal Training
Dolci'e Rose Beauty Supply
Essentials Skin Science
Faceframe Collective: Lemon Lash Academy +
Magnolia Hair & Co
Four One Three Salon
Franklin Barbershop
Hair by Jennifer
Hair Loft
*Hair Studio, The
Hair Unlimited
Hollywood Nails
Indulgence Salon
Intradermal Designs
Jenna Reid Psychic Medium
Justin Rivelli's Physique Transformations
Kristie Hartig Massage
Lisa A Pixley Licensed Electrologist LLC
Looks By Ashleigh, Eyelash Technician
Luna Faun Bodywork & Botanicals
Massage by JoAnna, Therapeutic Massage
by JoAnna M. Barzottini, LMT
Master of Nunn Tattoo
*MD Esthetics
Melissa Jones Massage Therapist
Mindful Berkshires
MR Barbers
Nova Salon
Pam Ellis - Berkshire Medium
Pampered Pup Dog Day Spa
Psychic Studio
Shadowboxing USA
*Skin + Tonix
Spirited Shears Hair Lounge
Styles by Martina
The Recovery Room
The Suites Hair Scene
Union Street Tattoo
Uplift Barber Studio
Upstreet Barber Shop
Williams Massage

HOME IMPROVEMENT, FURNISHINGS, & SERVICES - P. 19

Aaron's
Berkshire Cleanse & Clean
Berkshire Plate Glass
*Carr Hardware
Custom Window Treatments
Fresh Start Cleaning
George's Shoe Repair
*Gutters & Siding, LLC
Lee Miller Woodworking
*LOCAL Appliance Repair
Linden Street Laundromat
Martino Glass Company, Inc
*New England Dynamark Security
North Street Coin-Op Laundromat
*Paul Rich & Sons Home Furnishings + Design
Pittsfield Tailor Shop for Ladies & Men
QKB Kitchen & Bath Design Center
Rent-A-Center

INSURANCE - P. 35

*Berkshire Fairfield Insurance Agency, LLC /
Scarafoni Financial Group (An Alera
Group Company)

Greylock Insurance Agency
*Guardian Life Insurance Company of America
Health New England - Berkshire
MountainOne Insurance
New York Life
Northwestern Mutual
Pearson Wallace Insurance, LLC
Primerica
*Wheeler & Taylor, Inc.

LEGAL - P. 35

*Aaronson & Mach, P.C.
Albert J Cimini & Associates
Attorney Marc C. Vincelette
Attorney Shannon C. Plumb
Barry & Doyle, Attorneys at Law
Barry & Kinzer, LLP Attorneys at Law
Benjamin Smith & Associates, P.C.
Berkshire County District Attorney's Office
Berkshire Hills Mediation Services
Bleier Law, LLC
Brennan Law Offices
Brian Litscher, Attorney at Law
Bulkley Richardson
Campoli, Montealeone & Mozian, P.C.
Central West Justice Center
*Cohen Kinne Valicenti & Cook LLP
Community Legal Aid
C L & H (Courtney, Lee & Hamel P.C.)
Donovan O'Connor & Dodig, LLP
Drennan Law Offices
Elizabeth J. Quigley Law Office
Employment Law Center of Western MA /
Attorney Bernard J. Romani
Gable & Mercier, P.C.
George & McCarthy PC
Hashim & Spinola, Attorneys at Law
Hochberg Law Offices
Holly Rogers, Attorney at Law
Horan Law LLC
Lance S. Chavin Esq.
Lanny M Zuckerman Attorney at Law
Law Office of Eric Kornblum
Law Office of Mitchell I. Greenwald
Law Offices of Katherine J. Bierwas
Martin & Oliveira, LLC
Nuciforo Law Group, LLC
Peter J. Sturgeon, Attorney at Law
Raymond Jacob, Attorney at Law
Richard J. O'Brien, Attorney at Law
Righi Law and Esquire Realty
Scott A. Westcott, Attorney
Scott P. Clark, PC
Smith Green & Holmes, LLP
The Law Office of Douglas James Rose
The Law Offices of Jack E. Houghton Jr.
The Law Offices of Jonathan A. Broverman
The Law Offices of Sherwood Guernsey
The Law Office of Timothy J. Shugrue
of Pittsfield

LIBRARIES - P. 7

*Berkshire Athenaeum

LODGING - P. 12

Hilton Garden Inn
*Holiday Inn & Suites Pittsfield-Berkshires
Holiday Inn Express & Suites - Pittsfield/
Berkshire
Hotel on North
The Central Downtown Inn + Suites

ENGINEERING MANUFACTURING - P. 34

1st Climate Solutions
Blue Q
Electro Magnetic Applications, Inc.

/ EMA® Massachusetts
General Dynamics Mission Systems
Hallowell EMC
*Interprint, Inc.
Intertek Plastics Technology Laboratories
*J.H. Maxymilian, Inc.
M.J. Gordon Company
NTS Pittsfield

MARKETING, GRAPHIC DESIGN & PRINTING - P. 28 & P. 35

AH&M Marketing Communications
Berkshire Print Shop
Courier Printing, Inc.
*Guelce Collaborative Marketing
OCONCO Marketing, Inc
*Qualprint
*RB Design Co.
*RSI Signs
W J Blueprint & Digital Graphics

MEDIA - P. 36

*Berkshire Eagle, The
Berkshire Edge, The
Berkshire Film and Media Collaborative
Berkshire Trade & Commerce
Clayson Creative
iBerkshires
Kids Super Journal
*Photonics Media / Laurin Publishing Co., Inc.
Pittsfield Community Television / PCTV
Star 101.7 WBRK - FM
*Talon Media
*Townsquare Media Berkshire / LIVE 95.9
Vintage Digital Revival, LLC
WAMC Northeast Public Radio

MEDICAL SERVICES - P. 36

510 Medical Walk-In
Adaptive Prosthetics and Orthotics, LLC.
Advocacy for Access
Allegiance Nursing
Alternative Living Centers Outpatient Addiction
Services
Amanda Raymond, LMHC
Amedisys Home Health / Associated Home Care
ANGELIC Home Healthaid Inc.
Balco Partners
Behzad Parhizgar, MD, Dermatology
Berkshire Clinical Associates
Berkshire Cosmetic & Reconstructive Surgery
Center
Berkshire Denture Repair
Berkshire Ear, Nose, Throat & Audiological
Associates, P.C.
Berkshire Fallon Health Collaborative
Berkshire GreenLeaf & Wellness®, LLC, Marlee
Tyska, MSW, LICSW
Berkshire Harm Reduction
Berkshire Healing Arts
*Berkshire Health Systems / Berkshire Medical
Center
*Berkshire Health Systems Urgent Care
*Berkshire Heart and Mind Therapy
Berkshire Hypnosis
Berkshire Integrative Orthodontics
BMC Hearing & Balance Center
Berkshire Healthworks Employee Assistance
Program
BMC Internal Medicine Residents' Practice
Berkshire Medical Center Audiology & Hearing
Center
Berkshire Medicine
Berkshire Memory Services
*Berkshire Orthopaedic Associates, Inc.
Berkshire Osteopathic Health
*Berkshire Pediatrics
DowntownPittsfield.com 43

Berkshire Place
 Berkshire Psychiatric Associates
 Berkshire Smile Studio/ Shakil U. Syed, DDS
 Brien Center, The
 Center For Healing Interventions Inc (CHI)
 Central Berkshire Dentistry: Dr. Vladimir Nazarov, DMD
 CHP Neighborhood Dental Center
 *CHP Neighborhood Health Center
 CleanSlate Outpatient Addiction Medicine
 Clinical & Support Options Inc.
 Community First Therapy and Consulting, LLC
 David M. Martin, D.C.
 Donna S. Weber, LICSW
 Dorothy Mack LICSW
 Dr. James B Nesti, DMD
 Dr. Matheau D. Schiff, D.M.D.
 Edwin J. Helitzer, DMD
 Emma Lenski, LMHC
 Excel Home Care Services
 *Family Practice Associates
 FIRST Steps Together - CHD
 Francis F. McCarthy, D.M.D., P.C.
 Gandara Mental Health Center
 Giulio Cavalli, M.D., Otolaryngologist
 Greylock Audiology Hearing and Balance Center
 Hearing Aid Associates
 Hillcrest Center for Family Health (BMC)
 *Hillcrest Educational Centers
 Home Care Services of Massachusetts
 Home Instead
 Hospice of Western & Central Massachusetts
 Innovative Care Partners – CHD
 Integritus Healthcare Systems
 John Steven Cella, D.D.S.
 Laurie Swiatek, LICSW
 Lydia J. Cote, LICSW
 Mary N. Cella, D.D.S.
 Michael J. Williams, DMD, P.C. Periodontics and
 Dental Implant Reconstruction
 *Mind & Melody Therapy Services, LLC
 MindCare Agency PC
 Mountain View Home Care, Inc.
 Naileen Momin, AuD. Audiologist.
 New Direction Women's Center
 New Life Chiropractic
 Next Step Addiction Counseling
 Operation Better Start
 Orthotics & Prosthetics Labs, Inc.
 Philip F. Mamolito, D.M.D.
 Pittsfield Cardiology PC
 Pittsfield Community Acupuncture
 Pittsfield Dental Center
 Pittsfield Medical Associates
 Pittsfield Veterans Association Outpatient Clinic
 Pittsfield Vision Associates
 Pure Harmonies Body Works & Massage
 Quest Diagnostics
 Randall Fisher, LICSW
 Rebecca Johnson LICSW
 Residences at 89 South
 Right Choice Health Group
 River Valley Counseling Center
 SaVida Health
 Shire Acupuncture, LLC
 Stephanie J Nesbitt, LICSW
 Sugar Hill at Home
 Tapestry
 Thomas J. Sakshaug, D.D.S
 Tiffany Therapy, LLC
 Whole Heart Homecare, LLC
 Vertava Health of Pittsfield
 Visiting Angels
 VIM Berkshires (Volunteers in Medicine)
 VoiceAGE Clinical Dictation

MOVING & STORAGE - P. 36

*All-Ways Moving & Storage, Co., Inc.
 *MI-BOX of Central & Western Massachusetts

OUTDOOR - P. 24

Ashwiltcook Rail Trail
 Berkshire Bike and Board
 Berkshire Community Rowing
 Berkshire Natural Resources Council
 / The Boulders Reserve / Mahanna Cobble Trail
 Berkshire U-Drive Boat Rental
 *Bousquet Mountain
 *Bousquet Sport
 Burbank Park at Onota Lake
 Canoe Meadows Wildlife Sanctuary
 / Mass Audubon
 Downtown Loop
 *Hancock Shaker Village
 Onota Boat Livery
 Pittsfield Skate Plaza
 Pittsfield State Forest
 Pontoosuc Lake Park
 Springside Park

REALTY & PROPERTY MANAGEMENT - P. 36

*Allegre Companies
 AM Management
 Appraisal Group of Berkshire County
 Berkshire County Board of Realtors
 Berkshire Real Estate
 *Blueprint Property Group
 *Brotherhood Building - GDL Associates
 *Capitol Square Associates
 Cavalier Management Company
 Century 21 North East
 *CT Management Group
 David J. Tierney Jr., Inc.
 Dunham Mall Apartments
 Home Maintenance Alliance
 Jodi & Paul Tartell
 *Maplewood Association Trust
 *Mill Town Capital
 New Amsterdam Apartments
 *Nord Strasse LLC - Dennis McIntosh
 Notre Dame Apartments
 Onota 74 Residences
 Preservation Housing Management
 / Central Annex / Union Court
 R & S Realty
 Skytop Properties
 *Steve Oakes
 Terrace 592
 *Teton Management Corporation
 The Howard Residences
 *UpSide413
 Union Court Apartments

RELIGIOUS INSTITUTIONS - P. 38

A vinha Church Berkshires
 *Cathedral of the Beloved
 Congregation Knesset Israel
 First Baptist Church
 First Church of Christ Scientist
 *First United Methodist Church
 Iglesia Fuente de Salvacion Misionera Inc.
 La Iglesia Evangelical De Dios Inc.
 Price Memorial AME Zion Church
 St. Charles Borromeo Catholic Church
 St. George Greek Orthodox Church
 *St. Joseph's Church
 *St. Stephen's Episcopal Church
 Temple Anshe Amunim
 Truth Tabernacle U. P. C.
 *United Church of Christ Pittsfield

*Unitarian Universalist Church of Pittsfield
 *Zion Lutheran Church of Pittsfield

SHOPPING - P. 17

*413Shirts.com
 Aaron's
 Advance Auto Parts
 A-Mart
 Berkshire Bike and Board
 B & G Restaurant Supply
 *BBE Office Interiors
 Berkshire International Market
 *Berkshire Museum Shop
 *Berkshire Roots
 Big Y
 *Bomb Shack Vintage
 *Bottomless Bricks
 *Budhaus
 *Carr Hardware
 *Clark Vintage Lighting LLC
 Cumberland Farms
 CVS
 *Deidre's Special Day, Social Butterfly & Prom
 Central
 Dolc'e Rose Beauty Supply
 Dory & Ginger
 Family Dollar
 Garden Blossoms Florist
 *Independent Mobility
 *Indie Readery & Records LLC
 J & M Pipe & Tobacco
 *Kidding Around Consignment
 *Lipton Mart North
 *Mana Crypt Gaming Center
 *Miller Supply
 *Museum Outlets

*Nene's Deco
 O'Reilly Auto Parts
 *Paul Rich & Sons Home Furnishings + Design
 *Peace Train Tees
 Penny Arcade Press
 PhoneBros
 Pittsfield Health Food Center
 Pittsfield Precious Metals
 *QuickFix Mobile Repair and More
 Rent-A-Center
 *Sally Tiska Rice - Berkshire Rolling Hills Art
 *Solarium Plant Shop
 Soulful Intentions
 *Steven Valenti's Clothing
 *This & That Sports
 Tux Express
 Viale Florist Inc
 Walgreens
 West Side Clock Shop
 West Street Wine & Spirits

TRAVEL & TRANSPORTATION

- P. 39

Amtrak
 *Berkshire Regional Transit Authority
 Greyhound Bus
 *Link 413
 Peter Pan Bus
 Pittsfield Municipal Airport

UTILITIES/ENERGY - P. 39

Berkshire Gas Company
 Eversource
 *Lipton Energy
 Mirabito Energy

THIS GUIDE IS A COLLABORATION BETWEEN

Downtown Pittsfield, Inc. (DPI)

431 North Street | 413-443-6501
downtownpittsfield.com

Downtown Pittsfield, Inc. is Pittsfield's downtown association; the driving force, recognized leader, facilitator, and principal advocate for downtown since 1983. DPI is a nonprofit membership organization whose mission is to strengthen and promote Downtown Pittsfield, Inc.'s membership through advocacy, collaboration, and celebration. Downtown Pittsfield, Inc. and its members welcome people, businesses, and events to join our diverse, vibrant, and bustling district.



The City of Pittsfield's Office of Cultural Development

28 Renne Ave. | 413-499-9348 | lovepittsfield.com

Serves as the City's first point of contact for artists, cultural organizations, event organizers, and creative businesses in Pittsfield. We support, promote, and initiate cultural activity in Pittsfield to benefit our citizens, quality of life, and local economy. The Office is located in the city-owned Lichtenstein Center for the Arts in Pittsfield's Upstreet Cultural District. The building features a gallery/performance space featuring changing exhibitions, classes, meetings, and performances, as well as a ceramic studio, and nine working artist studios.



BROADWAY-QUALITY PERFORMANCES
IN DOWNTOWN PITTSFIELD

July 2-16
at The Colonial Theatre

**COMMUNITY
PROJECT**



America's Prize Winning Musical

music and lyrics by
Sherman Edwards
book by **Peter Stone**
based on a concept by Sherman Edwards
directed by **David Adkins**
music direction by **Erin White**
choreography by **Kathy Jo Grover**

July 31-August 23
at The Colonial Theatre

**A MUSIC-FILLED
COMEDY**



BY **MATTHEW LÓPEZ**
DIRECTED BY **ERIC HILL**
CHOREOGRAPHY BY **ISADORA WOLFE**

For a full event listing go to:
www.berkshiretheatregroup.org/on-our-stages/

UNICORN · COLONIAL · PLAYHOUSE

BERKSHIRE
THEATRE GROUP

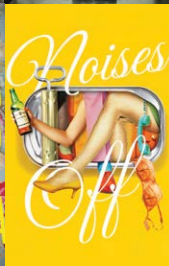
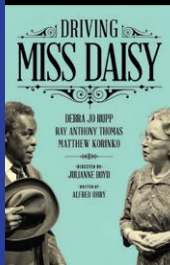


(413) 997-4444

BerkshireTheatreGroup.org

The Colonial Theatre

111 South Street • Pittsfield, MA



BARRINGTON STAGE
COMPANY

BARRINGTONSTAGECO.ORG | 413.242.6411